

# Paint-On Dental Dam

CE 0459

## Light-Cure Liquid Dam

**Paint-On Dental Dam** is a simple, effective and timesaving approach to saliva isolation and soft or hard tissue protection. The low viscosity, colored liquid flows evenly and is easily distinguished from teeth and gingiva. The rubberized resin is easily peeled away when restorations and bleach procedures are completed. **Paint-On Dental Dam** can also be used for repairing traditional dental dams.

The direct delivery system facilitates restorative procedures and the large capacity (3 mL) syringes cause fewer interruptions.

### DIRECTIONS

1. Remove the cap from the syringe (do not discard) and attach the syringe tip to the syringe.

#### Tip Guide:

Gray Plastic Tip: Use this tip for bleaching procedures.

Pink Needle: Use this tip for bleaching procedures or for applying material to the lingual side of interproximals.

2. Prime the tip by extruding a 1/4-inch line of the material, on a paper pad, before using to ensure adequate dispensing of the material.
3. Apply a bead of **Paint-On Dental Dam** on gingival surface surrounding the dentition you want to isolate.
4. Carefully manipulate to form a thin film of **Paint-On Dental Dam** with the syringe tip or spread it with a sable brush.
5. Clean the syringe tip or brush with organic solvent before any ambient light causes polymerization. Then, replace the cap.
6. Hold a light tip 1/2-inch (13 mm) away from the **Paint-On Dental Dam** material. Light cure, starting with:

5 seconds—**Sapphire™ Plasma Arc Curing Light**

10 seconds—**Allegro High-Intensity LED** or the **Phase II High-Speed Halogen Lights**

30 seconds—Conventional curing light. Repeat this procedure until the entire surface is cured.

7. Peel away the **Paint-On Dental Dam** using an explorer, **Schure 349**, or similar instrument after you complete your dental procedure.

### STORAGE

**Do not** expose to temperatures exceeding 75°F (24°C).

**Do not** expose to direct sunlight.

**Do not** freeze.

Cold storage is not required.

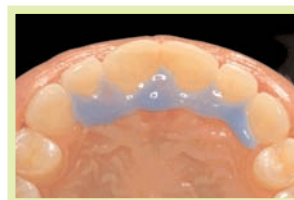
**MSDS SHEETS AVAILABLE AT [www.denmat.com](http://www.denmat.com)**

### Time-Saving Tips:

1. **Paint-On Dental Dam** is a helpful tool recommended for **LUMINEERS®** placement. Before bonding, syringe **Paint-On Dental Dam** on the lingual side of the interproximals covering the gums and teeth thoroughly. This will make your clean-up easier, faster, *better!*
2. Get better impressions with diastemas. Apply **Paint-On Dental Dam** to interproximals prior to taking the impression. This step will help prevent any tearing of the impression due to the diastema.



**Make LUMINEERS®  
Clean-up and Finishing,  
Faster, Easier,  
Better!**



Before



After