



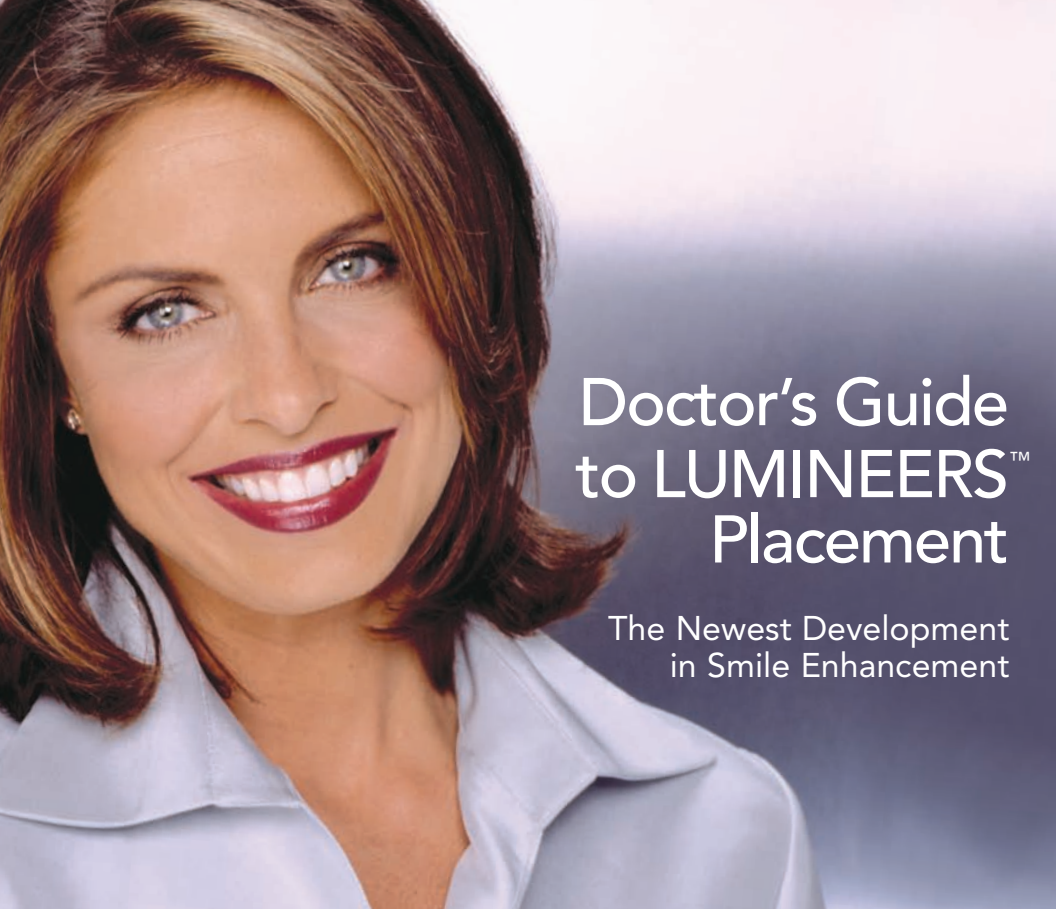
DON'T FORGET TO ASK ABOUT CERINATE® COURSES:

- DESTINATION EDUCATION—
3-day seminar in vacation locations
- CERINATE SMILE DESIGN WORKSHOPS—
2-day hands-on course in your local area
- LUMINEERS™ LIVE-PATIENT PLACEMENT COURSE—
2-day over-the-shoulder course at Cerinate Smile
Design Studios

Call 1-800-445-0345 today to find a course near you!



PERMANENT · PLEASANT · PAINLESS™



Doctor's Guide
to LUMINEERS™
Placement

The Newest Development
in Smile Enhancement

IMPORTANT! READ BEFORE PLACEMENT.

LEADING EVALUATORS GIVE
highest award
TO LUMINEERS™ BY CERINATE®!



"100% of restorations received from the studio were rated very good to excellent."

*"All restorations exhibited **excellent esthetics.**"*

TABLE OF CONTENTS



Introduction.....	4
Placement Guide.....	5
Adjusting Occlusion	6
Tips for Success	7-8
Step-by-Step Procedure for Bonding to Enamel or Dentin	9-13
Step-by-Step Procedure for Bonding Porcelain to Porcelain	14-15
Materials	16-19
1-877-LUMINEERS DDS.....	20-21
Patient Marketing	22
Warranty and Contact Information	23

INTRODUCTION

REVOLUTIONIZING THE WAY NEW SMILES ARE MADE:

Today's consumers are more likely than ever before to look into cosmetic dentistry—but this increased awareness is accompanied by an aversion to the pain associated with dental surgery. With LUMINEERS™ BY CERINATE®, painful removal of tooth structure is not required, thereby encouraging patients to pursue their smile enhancement goals.

Cerinate® Porcelain is the strongest leucite-reinforced ceramic on the market. When used with Ultra-Bond® and Tenure®, LUMINEERS can be made as thin as a contact lens. The ability to apply LUMINEERS directly to a tooth's surface means less preparation and faster procedures. A lab study evaluating transverse strength proved that Cerinate porcelain showed a higher transverse strength and greater reliability than other materials tested. Cerinate is proven to last over 20 years.*

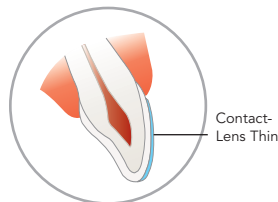
LUMINEERS™
BY CERINATE®

* Study available upon request

PLACEMENT GUIDE

The LUMINEERS™ No-Prep Technique

allows LUMINEERS to be placed over the existing teeth without the removal of any form of tooth structure. Therefore, anesthesia and temporaries are also not required. The majority of patients fit this technique. It is a proven fact that bonding enamel to porcelain is a solid, secure bond compared to bonding dentin and porcelain.



LUMINEERS™ BY CERINATE®

No sensitive tooth removal required—only 0.3 mm–0.5 mm added to the enamel

The LUMINEERS Minimal Contouring Technique

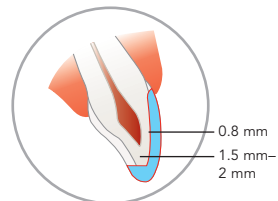
requires slight modification of the enamel but never touches dentin during LUMINEERS placement. Only .3 mm–.5 mm enamel is removed, causing no sensitivity for the patient and therefore no need for any anesthesia. Minimal contouring is commonly used when cases involve misalignment. Minimal contouring requires the use of 4X magnification and a fluted carbide diamond.



Proper composite removal and enamel contouring using a fine diamond.

The LUMINEERS Full-Prep Technique

is most commonly required when a thick porcelain is used. The full prep technique was developed to compensate for the thick porcelain available to them at the time. LUMINEERS made of Cerinate porcelain is a major cosmetic breakthrough. It can be made thick or thin; most patients, however, prefer thin LUMINEERS due to the non-invasive technique. An additional appointment is required for this process as well as anesthesia and temporaries. And as noted before, bonding enamel to porcelain creates a solid, secure bond compared to bonding dentin and porcelain.

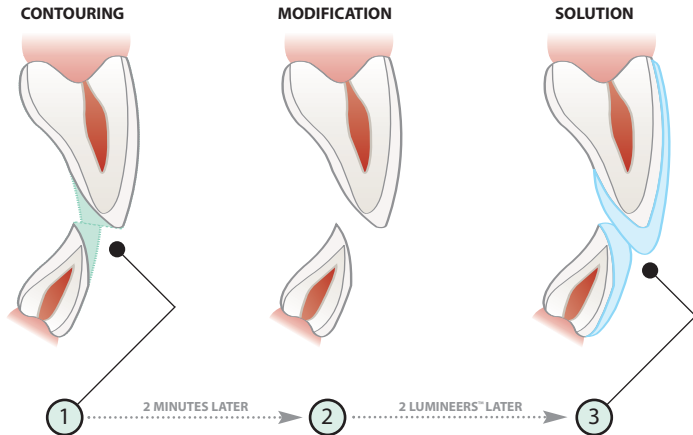


TRADITIONAL PREP VENEERS

Approximately 0.8 mm–2 mm healthy tooth structure removed

ADJUSTING OCCLUSION

HOW TO LENGTHEN ANTERIORS WITHOUT INCREASING VERTICAL DIMENSION



Using ultra-fine diamonds,* a light feather touch and a fine water spray, remove the lingual of the maxillary and the labial of the lower anterior. In most cases it is not necessary to shorten the teeth or remove any sensitive tooth structure.

*Included in the LUMINEERS Finishing Kit (#033897100).

Space obtained: 1–2 mm. The posterior teeth continue to be in centric contact as they were before. And, there is no bite opening.

- Create round edges on the maxillary teeth when the porcelain covers the incisal edges.

Placement of **LUMINEERS™** restores length, provides porcelain against porcelain occlusal contact and is supported by tooth structure.

TIPS FOR SUCCESS

The LUMINEERS™ BY CERINATE® program is extremely successful and exciting because it is every dentist's and every patient's dream. You can provide a new smile without shots, without the painful removal of sensitive tooth structure, and without the need for even an aspirin being given before, during or after the placement of a new, gorgeous LUMINEERS smile. Listed below are tips for successful placement of LUMINEERS or as some dentists like to think of it: *"How to prevent remakes!"*

TIPS FOR NEW CUSTOMERS:

- **Pre-Training:** Make sure that you have attended a LUMINEERS course, especially within the past 12 months. It may look or seem simple, until you encounter an opportunity you haven't had experience with before. A course on the placement of LUMINEERS will help you avoid any initial start-up pitfalls. You will also learn about the most current products and techniques, as these are in a continuous state of improvement.
- **Be Selective:** Selecting a case of 6-8 units on well-aligned maxillary teeth is your best bet. Avoid extreme cases (severely stained, overly crooked, large diastemas, gingival recession or missing teeth) until you're more experienced in the placement technique.

TIPS PRIOR TO SENDING IN A CASE:

- **Staff Training:** Your staff are critical to the successful placement of LUMINEERS. One of your best investments is the training of your assistant in this procedure. Proper preparation of the LUMINEERS, the right sequence of use of the materials, the prevention of pre-polymerization and the correct mix of the luting agent are all critical parts of your success.
- **Shade:** It is always easier to make a lighter shade darker; but almost impossible to make a darker shade lighter.

TIPS FOR SUCCESS

- **Single Units:** If at all possible, also avoid doing a single LUMINEERS. These are difficult to color-match and maintain. Natural dentition adjacent to the LUMINEERS normally will darken over time. If the patient bleaches, then their natural teeth may end up lighter than the LUMINEERS. It may save the patient an expense early on, but it will cause dissatisfaction for the patient in the future. If the teeth are harmonious in form, the single laminated tooth without reduction will always be too prominent. Whenever possible, encourage the patient to place multiples of 2 and 4, at a minimum, rather than doing one anterior tooth without any reduction.
- **Good Impressions:** Do you remember how tough your professors were on you in dental school to take good, sharp impressions? It is extremely important that you take a sharp impression because this is what guarantees a great, successful case, start-to-finish. Always allow trays to remain in the mouth for the full amount of time, according to manufacturer's directions.

NOTE: It is best to pour a model from the impression to make sure the gingival margins are sharp. This will save the time from having to remake impressions.

- **Materials:** To achieve the highest esthetic value, proper fit, and shade matching, the entire LUMINEERS System is required. The system includes Ultra-Bond® Plus Try-In Paste, Shade Modification Kit, Ultra-Bond Plus and Tenure® Attending a Cerinate procedures presentation is highly recommended to ensure proper use of the System.

BASIC STEP-BY-STEP

BONDING LUMINEERS™ TO ENAMEL OR A DENTIN SURFACE

1. USE 4-POWER MAGNIFICATION

4-power magnification is essential. Get yourself a good magnification system whether from Den-Mat or someone else. Your own prescription may be placed in the eyeglass lenses. You will be better able to do excellent work and prevent problems coming back to you because you will have taken care of them beforehand.



2. PREPARATION OF LUMINEERS

- After the patient is seated, treat the LUMINEERS with Porcelain Conditioner for 30 seconds, rinse and dry well.
- Apply Cerinate Prime® to the LUMINEERS for 30 seconds and blow thin.
- Place LUMINEERS back into the case box in their proper slots.



1. Apply porcelain conditioner.

3. TRY-IN OF LUMINEERS

- It is always best to try in LUMINEERS with the Ultra-Bond Plus Try-In Paste (Kit No. 031343550) to get a more natural, translucent appearance. Try-In Paste is a must for patient satisfaction and acceptance.

TIP: Using “Neutral” on a thin LUMINEERS will allow almost all of the color of the underlying tooth to come through. Use this shade only when the current tooth shade is desired. If you try veneers in with water or any other medium other than the Try-In Paste, the patient will not see what the LUMINEERS are really going to look like on the tooth.



2. Apply Cerinate Prime.



3. Try-In LUMINEERS.

BASIC STEP-BY-STEP

4. SURFACE PREPARATION

- Clean the teeth with a slurry of Porcelain Laminate Polishing Paste and water.
- Etch teeth for 20 seconds with Etch 'N' Seal® rinse and dry.
- Mix together equal amounts of Tenure® A and B.
- Apply 5 coats of the A-B mixture to each tooth, then dry the tooth surfaces. They should appear glossy.
- If the surfaces are not glossy, reapply Tenure A and B until you get a nice glossy coating.
- Syringe Paint-On Dental Dam on lingual side of the interproximals covering the gums and teeth thoroughly (this aids in clean-up).

5. BONDING LUMINEERS™

- Select the appropriate shade of Ultra-Bond® (Kit No. 032599550). NOTE: If patient has dark stains, such as tetracycline stains, we recommend the Cerinate® Shade Modification Kit (Part No. 033909900). If shade modification or basic opaque adjustment is necessary, refer to this kit's instructions at this point in time. If not, proceed to the next step.



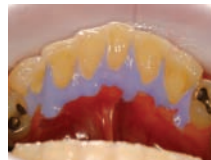
4. Clean the teeth.



5. Etch the teeth.



6. Apply adhesive.



7. Place a dental dam on the linguals.

BASIC STEP-BY-STEP

NOTE: After color selection is achieved, internal surfaces of LUMINEERS do not need to be retreated.

- Apply Ultra-Bond to the prepared LUMINEERS and put in place. **NOTE:** Ultra-Bond will self-cure in approximately 22 minutes.
- After placing, remove excess Ultra-Bond with a soft brush coated with Tenure® S or with Dab-Eze® sponges.
- Tack LUMINEERS in place using a Sapphire Plasma Arc Curing Light fitted with a Ceri-Taper™ 2 mm tip for 2 seconds.
- Continue to remove excess cement with a soft brush coated with Tenure S.
- Completely light-cure all LUMINEERS, exposing each surface for 5 seconds with a Sapphire Plasma Arc Curing Light fitted with a 9 mm tip.



CERI-TAPER™ TACKING TIP
Available in 2mm or 4mm



8. Apply Ultra-Bond to LUMINEERS.



9. Place LUMINEERS.



10. Cure LUMINEERS.

BASIC STEP-BY-STEP

5. FINISHING

We recommend the LUMINEERS Finishing Kit No. 033897100 which includes all the tools mentioned below.

- Use Den-Mat's® Schure 349 instrument to remove the cured cement along the margins, as well as from the interproximal area along both the facial and the lingual. You may also use bur H246LUF012. This bur is an excellent tool for cleaning up residual resin cement and also great for finishing composites.
- Use bur 0856016 to remove the porcelain ledge.
- Trim/polish the margins of the porcelain veneer. Use bur 858EF014, an extra-fine diamond, to smooth out porcelain.
- Using the interproximal fine diamond bur No. 8392016, known as the "mosquito" diamond, refine the margins along the interproximal area.
- Explore the tooth structure next to the CERINATE LUMINEERS to check margins. There should not be a catch (or bump).
- If necessary, further polish the margins using the interproximal fine diamond bur again.
- Check the bite with articulating paper. Use bur 8379018, the American football-shaped bur, on the lingual to finish the incisal wrap and adjust high spots or length.



11. Remove excess cement.



12. Mimic a DEJ with use of a diamond and magnification.

BASIC STEP-BY-STEP

- Place a wooden wedge interproximally.
- Use the CeriSaw to separate the teeth. Leave the wooden wedge in place.
- Use the CeriSander (fine grit) to smooth the interproximal surfaces.
- Remove the wooden wedge.
- Use the CeriSander (ultra-fine grit) to further smooth the interproximal surfaces. It is important that you use each sanding blade only two or three times to open contacts.
- Check the interproximal surfaces with dental floss for smoothness.
- Polish the new smile with Porcelain Laminate Polishing Paste.



13. Open interproximals.



0856016



858EF014



H246LUF012



8379018



8392016

BASIC STEP-BY-STEP

BONDING PORCELAIN TO A PORCELAIN SURFACE®

TIPS:

- **Placing LUMINEERS™ Over Crowns with Metal Margins:** It is essential to use 4-power magnification and a small bur to remove the metal so there's at least 1 mm of space between the LUMINEERS and the metal. This will allow for application of either TetraPaque® or Virtuoso® Flowable to fill that area and make it look natural again.
- **Placing LUMINEERS Over Pre-Existing Restorations:** Whenever possible, it is best to place LUMINEERS on all units of a pre-existing bridge to get the most satisfactory result. It is generally impossible to achieve a correct shade match when veneering 1 unit of a multi-unit restoration. Use of the Cerinate® Shade Modification Kit is most helpful. It is important to know how to prepare all the surfaces in these types of cases. Again, this is where a LUMINEERS Placement Course can make the difference in long-lasting, beautiful restorations.



BEFORE



AFTER

BASIC STEP-BY-STEP

STEPS:

1. Sandblast (microetch) to roughen the porcelain surface.
2. Apply Revitalize™ Porcelain Etchant (Kit No. 402060) to the porcelain surface for 2–3 minutes, then rinse and dry. Avoid soft tissue contact.

NOTE: Porcelock®/Revitalize Porcelain Etchant is only for porcelain.

3. Apply Porcelain Conditioner to the porcelain surface for 30 seconds, then rinse and dry.
4. Apply Cerinate Prime® (Kit No. 1399) and gently air dry.
5. Mix together equal portions of Tenure® A/B and apply 3-5 coats.
6. Use the Revitalize Modifier and Opaquer (a thin layer) on the metal to mask discoloration, if needed.
7. Apply Revitalize Resin Cement inside LUMINEERS™ and place LUMINEERS on the tooth surface.
8. Light-cure for 1–2 seconds using the Ceri-Taper™ 2 mm or 4 mm tacking tip and the Sapphire Plasma Arc Curing Light. Remove excess Revitalize Resin Cement from the margins by using a soft brush coated with Tenure S. Using a 9 mm tip and the Sapphire PAC Light, completely cure all LUMINEERS, exposing each surface for 5 seconds.
9. **Maximum bonding occurs in 24 hours. Final finishing should be performed at next visit.**
10. Finishing—Adjust the occlusion and perform a routine finish on the margins.

MATERIALS

ALL THE TOOLS YOU NEED FOR LUMINEERS™ PLACEMENT IN ONE CONVENIENT, REUSABLE CONTAINER.

This kit eliminates a cabinet of four to six different kits for your LUMINEERS placement. No more trying to remember everything you need and having it ready at chairside. In a convenient, ergonomically designed package, this kit takes you through impression, try-in, preparation, placement and finishing. Each tray is designed to fit your chairside as well.



MATERIALS

- **ULTRA-BOND® PLUS BONDING CEMENT**

Ultra-Bond bonding cement is proven to prevent microleakage, cracking/crazing and pop-offs. LUMINEERS, bonded with Ultra-Bond and Tenure®, create a wear resistant, non-microleaking, highly esthetic restoration that is clinically proven in on-going studies to last over 20 years. Available in Syringeable or Powder-Liquid formulations.



- **ULTRA-BOND® PLUS TRY-IN PASTE**

LUMINEERS™ made of Cerinate® porcelain, if placed on the model, are intended to have a loose fit to allow room for the restorative, Ultra-Bond® Plus, an ADA Type II resin cement. Use to try-in restorations to verify shade.



- **TENURE®**
- MULTI-PURPOSE BONDING SYSTEM**

Complete multi-surface bonding system.



- **SHADE MODIFICATION SYSTEM BY CERINATE®**

Color tints and opaquers in a variety of shades for customization.



MATERIALS

- **LUMINEERS™ IMPRESSIONS**

Super hydrophilic, polyvinylsiloxane impression material that gives you the precision and speed you need for accurate impressions, time after time. *Patients love the Berry-Berry flavor.*



- **CERINATE PRIME® & CONDITIONER**

Bonding agent and etchant to bond porcelain to natural tooth structure.



- **GORGEOUS TEMP™**

Create beautiful provisionals faster and easier with this highly-rated, dual-cure provisional material.



MATERIALS



- **SAPPHIRE PLASMA ARC LIGHT WITH CERI-TAPER™ TACKING TIPS**
New 2 and 4 mm tips can shorten finishing time by 50%.

- **LUMINEERS™ FINISHING KIT**
Tools that make dentistry faster, easier, and better!

This finishing system is the only one of its kind available to the dental profession. This is an all-inclusive kit that allows you to finish LUMINEERS without the need for shots or drilling. These simple tools save you time and are more comforting to the patient. Be a hero in your community.

- **LUMINEERS™ MAGNIFICATION SYSTEM**
Provides superior wide field of vision, plus—it's lightweight.



MAGNIFICATION GLASSES

#040201220.....420 mm x 4.0

#040201320.....370 mm x 4.0

JOIN THE LUMINEERS™ PRACTICE SOLUTIONS PROGRAM **TODAY!**

All of us at Den-Mat® Corporation wish to support and encourage dentists that share our philosophy of non-invasive cosmetic dentistry. That's why we've created the LUMINEERS Practice Solutions Program.

LUMINEERS™ BY CERINATE® IS REMOVING BARRIERS FOR CONSUMERS WHO WANT TO IMPROVE THEIR SMILES!

Consumers are looking for a pain-free, non-invasive alternative to beautify their smiles and improve their appearance and overall self-image—without the shots and reduction of tooth structure associated with traditional veneers.

LUMINEERS BY CERINATE has become an immediate consumer sensation with thousands of patients asking for a local dentist in their area and even more going directly to their dentist and asking for LUMINEERS.

WHAT IS THE LUMINEERS PRACTICE SOLUTIONS PROGRAM?

The 1-877-LUMINEERS Marketing and Practice Development Program is designed to train you and your office staff on how to successfully promote and build your LUMINEERS practice.

Join today and position yourself at the forefront of non-invasive cosmetic dentistry as a LUMINEERS Practice Solutions Program dentist by creating an office experience that is conducive to successfully promoting your services and increasing LUMINEERS production—[call 1-800-445-0345 to join](tel:1-800-445-0345).

MORE THAN JUST A REFERRAL PROGRAM

EXCLUSIVE MEMBERSHIP BENEFITS

- **National and local advertising**
- **Exclusive LUMINEERS Referrals**
- **Personal services**
 - Initial, onsite practice setup
 - Monthly consultation call with your dedicated LUMINEERS representative.
- **Upscale, proven LUMINEERS marketing collateral**
- **Members-only training opportunities**
 - 50% off your workshop fee and 2 staff members free
- **25% off all LUMINEERS restorative materials**
- **Complimentary 4X magnification loupes**
- **Complimentary joint advertising CD**
- **Access to link with lumineers.com**
- **Access to 1-877-LUMINEERS Marketing Specialists**
- **Local public relations package**



PATIENT MARKETING INCREASES YOUR CERINATE® BUSINESS

To help you maximize this historic breakthrough in cosmetic dentistry, we're here to offer you comprehensive marketing advice and support. Whether it's in-office, staff salesmanship, ads, or direct mail—actively marketing LUMINEERS will bring people through your office doors.

- COUNTER CARDS
- PATIENT EDUCATION BROCHURES
- DIRECT MAIL
- POSTERS
- APPOINTMENT CARDS
- POST CARDS



WARRANTY AND CONTACT INFORMATION

FIVE YEAR LIMITED WARRANTY

LUMINEERS™ BY CERINATE® is warranted against defects in workmanship and materials for a period of five (5) years from delivery date.

Ultra-Bond® and Tenure® were specifically formulated to match the properties of Cerinate LUMINEERS. The Cerinate Trio System: LUMINEERS, Ultra-Bond and Tenure have been proven in an on-going study to produce no debondings for over 20 years. We are confident you will find success with LUMINEERS for your patients. When you use the Cerinate Trio System together, we guarantee your case for up to five years.

For technical support, call your representative at 1-800-445-0345.

- Cerinate Studios: 1-800-872-8384
- Case photos can be e-mailed to cerinatestudios@denmat.com.
- Lumismile (digital imaging service) lumismile@denmat.com