



the ultimate guide to

cerinate one-hour permanent veneers



one appointment.

one beautiful new smile.

20 ye



ars evidence-based research

backed by a limited lifetime warranty

supported by national tv campaign

Literally thousands of patients don't pursue esthetic restorations because of expense and treatment time. Cerinate One-Hour Smile Makeovers from DenMat are changing that paradigm forever. They're affordable, they're convenient, they're minimally invasive...and they're beautiful.

Placement is usually completed in just one treatment session. No 'free hand' technique is necessary, as with composite bonding, and no impressions or laboratory work are required. Cerinate porcelain is backed by 20 years of evidence-based research and affords greater luminosity over time when compared to composite restorations.

Not only that, Cerinate One-Hour Permanent Veneers are backed by a limited lifetime warranty and are the only alternative to composite bonding supported by a national TV campaign.



one appointment.

20 ye

one beautiful new smile.

Why Will Your Patients Love Cerinate One-Hour Permanent Veneers?

A beautiful smile makeover in one hour is a compelling promise to your patients. Not only is the procedure painless and fast, it's accomplished with no removal of sensitive tooth structure. They'll have a permanently white, permanently beautiful new smile that won't stain over time, as so often seen with bonding.

Advantages for the Dentist:

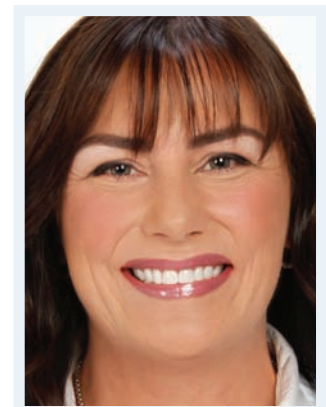
- Only one session required for placement
- Economical for you and your patient
- No 'free hand' layering technique as with composite bonding
- Cerinate porcelain has greater luminosity than composites over time
- No impressions or laboratory needed
- Backed by 20 years evidence-based research
- Minimally invasive means greater patient acceptance
- The only composite bonding alternative supported by a national TV campaign
- Backed by a Limited Lifetime Warranty

Advantages for the Patient:

- Instant smile makeover in only one-hour
- Painless procedure
- No removal of sensitive tooth structure
- Permanent whitening, guaranteed results
- Affordable, can fit most wallets
- Beautiful esthetic results that won't stain over time as seen with bonding
- Long-lasting smile results, porcelain outperforms composites



before



after

*"We developed Cerinate One-Hour Permanent Veneers to make **quality esthetics both more affordable and more convenient for patients.** Cerinate porcelain veneers are beautiful and long-lasting. Finally, there is a superior option to composites for esthetic, clinically proven veneers."* –Dr. Cyrus Tahmasebi

Strong, Beautiful, Clinically Proven

Over 20 years of evidence-based research proves that Cerinate One-Hour Permanent Veneers will create lasting smiles for your patients. Cerinate Pressable is the strongest leucite-reinforced pressable glass ceramic on the market today.^{1,2,3} While exhibiting low wear rates against opposing dentition when compared to conventional porcelain, its reliability is more than twice that of Empress.⁴ Because of its low viscosity, veneers can be pressed as thin as 0.1mm⁵.

- 1) Cerinate Pressable is the strongest leucite reinforced, pressable glass ceramic on the market today. ^{1,2,3}
- 2) The reliability of Cerinate Pressable is significantly higher than Empress (shown by a Weibull m value for Cerinate Pressable shaded double that of Empress shaded)¹, a pressable porcelain which already shows good clinical reliability.⁵
- 3) Cerinate Pressable exhibits low wear rates against opposing enamel when compared to conventional porcelain.⁴
- 4) The low viscosity glass of Cerinate Pressable allows pressing of restorations as thin as 0.1 mm.⁶
- 5) Cerinate porcelain is manufactured by DenMat at its Santa Maria, California ISO 9001 facility. DenMat directly controls the entire process from the receipt of raw materials through porcelain manufacture to the production of finished restorations.

before  after



(1) M.J. Cattell, T.C. Chadwick, J.C. Knowles, R.L. Clarke, and E.J. Lynch, "Flexural Strength Optimization Of A Leucite Reinforced Glass Ceramic", Dent. Mater. 17 (1), 21-33 (2001).
 (2) M.J. Cattell, J.C. Knowles, R. L. Clarke, and E. J. Lynch, "The Transverse Strength, Reliability and Microstructural Features of Four Dental Ceramics-Part I", J. Dent. 25 (5), 399- 407 (1997).
 (3) M.J. Cattell, J.C. Knowles, R. L. Clarke, and E. J. Lynch, "The Biaxial Flexural Strength Of Two Pressable Ceramic Systems", J. Dent. 27 (3), 183-196 (1999).
 (4) S. Suzuki, Univ. of Alabama, unpublished results.
 (5) C. Lehner, S. Studer, and P. Schaer, "Seven Year Results Of Leucite Reinforced Glass-Ceramic Crowns", J. Dent. Res. 77, 802 (1998); Abstr. No. 1368.
 (6) M.J. Cattell, "Advantages Of A New Pressable Ceramic System", Unpublished Report Prepared For Den-Mat Corporation, 1 February 1999

Cerinate® One-Hour Permanent Veneers – Technical Data

Flexural Strength*	188 MPa
Size, leucite crystals*	1 μ
Reliability (Weibull modulus) ¹	10.20 (highest of those tested)

*Cattell MJ, Clarke RL, Lynch EJ, "The transverse strength, reliability and microstructural features of four dental ceramics," J Dent 1997 Sep; 25(5):399-407.
 1Cattell MJ, Clarke RL, Lynch EJ, "The biaxial flexural strength and reliability of four dental ceramics – Part II," J Dent 1997 Sep; 25(5):409-14.

one appointment.

20 ye

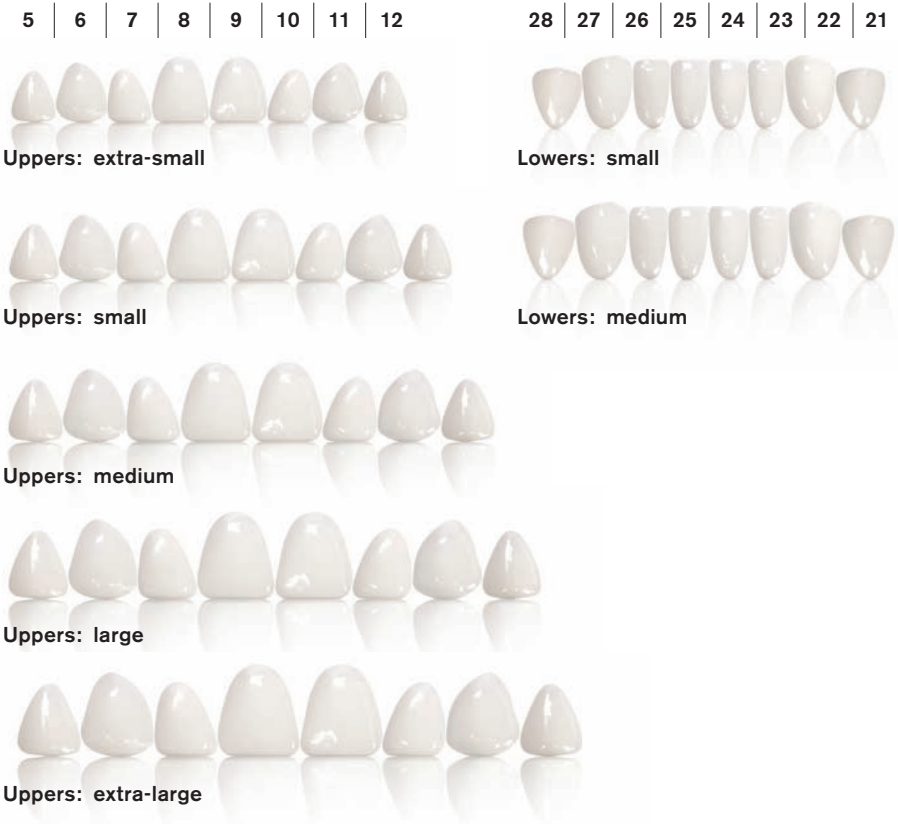
one beautiful new smile.

Product Overview

Made in the USA

Cerinate porcelain is manufactured by DenMat at its Santa Maria, California ISO 9001 facility. From raw material to porcelain manufacturing to finished restorations, we build quality and dependability in at every stage.

4 Shades: OM1, B1, A1, A2
Upper Sets: XS, S, M, L, XL
Lower Sets: S, M
8 teeth: Cuspid and Bicuspid or Central and Lateral



UPPERS		5	6	7	8	9	10	11	12
XS	Height	8.4	8.8	7.79	9.39	9.39	7.79	8.8	8.4
	Width	6.95	7.15	6.13	8.06	8.06	6.13	7.15	6.95
S	Height	9.24	9.68	8.57	10.33	10.33	8.57	9.68	9.24
	Width	7.65	7.87	6.74	8.87	8.87	6.74	7.87	7.65
M	Height	10.16	10.65	9.43	11.36	11.36	9.43	10.65	10.16
	Width	8.41	8.65	7.42	9.75	9.75	7.42	8.65	8.41
L	Height	11.18	11.71	10.37	12.5	12.5	10.37	11.71	11.18
	Width	9.25	9.52	8.16	10.73	10.73	8.16	9.52	9.25
XL	Height	12.3	12.88	11.41	13.75	13.75	11.41	12.88	12.3
	Width	10.18	10.47	8.97	11.8	11.8	8.97	10.47	10.18

LOWERS		28	27	26	25	24	23	22	21
S	Height	9.24	11.09	10.89	11.05	11.05	10.89	11.09	9.24
	Width	7.65	7.87	5.71	5.57	5.57	5.71	7.87	7.65
M	Height	10.16	12.2	11.98	12.16	12.16	11.98	12.2	10.16
	Width	8.41	8.65	6.28	6.13	6.13	6.28	8.65	8.41

ars evidence-based research backed by a limited lifetime warranty supported by national tv campaign

Step-by-Step

There is true beauty in simplicity. The step-by-step procedure shown here is followed to treat most clinical indications. Placement is usually completed in one session.

Minimally invasive. Maximum esthetics. All in about one hour. It just doesn't get any better than that.

Step 1.



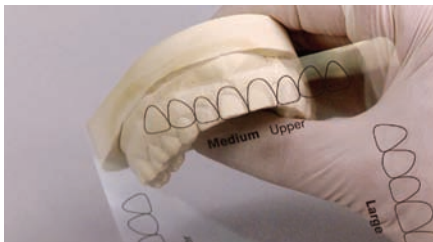
Take an impression of the teeth that will be treated, preferably using LUMINEERS Impression PVS, and pour a stone model.

Step 5.



Recontour where necessary, then remove surface glaze.

Step 2.



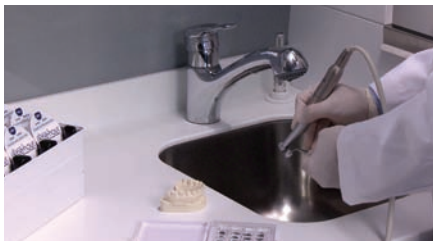
The Cerinate One-Hour Veneers can be fitted either intraorally directly to the teeth being restored or indirectly using the stone model and sizing guide.

Step 6.



Apply Ultra-Bond Plus to the prepared One-Hour Veneers and put in place one at a time.

Step 3.



Margins can be adjusted by carefully using a fine diamond in a high speed LUMINEERS Porcelain Finishing Kit (033897100).

Step 7.



Check the interproximal surfaces with dental floss for smoothness.

Step 4.



Try-in Procedure: Make any shade and opacity modifications necessary.

Step 8.



A beautiful new smile in under one hour!

Everything you need for placement in one kit.

Cerinate® One-Hour Permanent Veneers

Everything you need for Cerinate One-Hour Veneer cases is contained in this comprehensive kit. A technique video is included to answer any questions you may have.



Kit No. 032911100

Kit Contents Tray #1



80 Cerinate One-Hour Veneers Units in total:

Cerinate One-Hour Veneers, Upper 2-4pc sets, Small B1
 Cerinate One-Hour Veneers, Upper 2-4pc sets, Small OM1
 Cerinate One-Hour Veneers, Upper 2-4pc sets, Medium B1
 Cerinate One-Hour Veneers, Upper 2-4pc sets, Large OM1
 Cerinate One-Hour Veneers, Lower 2-4pc sets, Small B1
 Cerinate One-Hour Veneers, Lower 2-4pc sets, Medium B1
 Cerinate One-Hour Veneers, Lower 2-4pc sets, Medium OM1
 Cerinate One-Hour Veneers, Upper 2-4pc sets, Medium OM1
 Cerinate One-Hour Veneers, Upper 2-4pc sets, Large B1

Kit Contents Tray #2



Ultra-Bond® Plus Cement B1, 6 g
 Ultra-Bond Plus Cement Supreme White, 6 g
 Ultra-Bond Plus Try-In Paste B1, 1 g
 Ultra-Bond Plus Try-In Paste Supreme White®, 1 g
 Porcelain Laminate Polishing Paste, 5 g
 Paint-On Dental Dam 3 mL
 Etch 'N' Seal® 3 mL
 Porcelock® Porcelain Etchant 1.75 mL
 Tenure® A & B Adhesives 6 mL ea
 Cerinate Prime® 5 mL
 Porcelain Conditioner 6 g
 Brush Tip handle 1pc
 Tenure® S Dab-Eze® 3 g
 Schure 349 Instrument
 Cerinate One-Hour Guide
 Cerinate One-Hour Instructions

Kit Contents Tray #3



Virtuoso® Flowable B1
 Shade Modifier White 1 g
 Shade Modifier Yellow 1 g
 Shade Modifier Violet 1 g
 TetraPaque® Dentin 1 g
 TetraPaque Enamel 1 g
 LUMINEERS® Finishing Bur Block
 CeriSaw Anterior Blade 2 pc
 Working Tray for Veneers 1 pc
 Sizing Chart 1
 Sizing Chart 2
 Sizing Chart 3
 Syringe tips 18G/10 pc
 Auto mixing tips 8 pc
 Curing Rings 6 pc
 Syringe tips 20G/40 pc
 Brush tips 60 pc
 CeriSander strips, fine 12 pc
 CeriSander strips, ultra-fine 12 pc
 CeriSaw anterior blades 20 pc
 Cerinate Shade Modification DVD

Cerinate® One-Hour Permanent Veneers Refill Kits— 4 Veneers per Package



Cerinate One-Hour Veneers: Lower

Cerinate One-Hour Veneers: SMALL

Cerinate One-Hour Veneers, Lower Central and Lateral, SMALL, B1
 Cerinate One-Hour Veneers, Lower Cuspid and Bicuspid, SMALL, B1
 Cerinate One-Hour Veneers, Lower Central and Lateral, SMALL, A1
 Cerinate One-Hour Veneers, Lower Cuspid and Bicuspid, SMALL, A1
 Cerinate One-Hour Veneers, Lower Central and Lateral, SMALL, OM1
 Cerinate One-Hour Veneers, Lower Cuspid and Bicuspid, SMALL, OM1
 Cerinate One-Hour Veneers, Lower Central and Lateral, SMALL, A2
 Cerinate One-Hour Veneers, Lower Cuspid and Bicuspid, SMALL, A2

Cerinate One-Hour Veneers: MEDIUM

Cerinate One-Hour Veneers, Lower Central and Lateral, MEDIUM, B1
 Cerinate One-Hour Veneers, Lower Cuspid and Bicuspid, MEDIUM, B1
 Cerinate One-Hour Veneers, Lower Central and Lateral, MEDIUM, A1
 Cerinate One-Hour Veneers, Lower Cuspid and Bicuspid, MEDIUM, A1
 Cerinate One-Hour Veneers, Lower Central and Lateral, MEDIUM, OM1
 Cerinate One-Hour Veneers, Lower Cuspid and Bicuspid, MEDIUM, OM1
 Cerinate One-Hour Veneers, Lower Central and Lateral, MEDIUM, A2
 Cerinate One-Hour Veneers, Lower Cuspid and Bicuspid, MEDIUM, A2

Cerinate One-Hour Veneers: Uppers

Cerinate One-Hour Veneers: X-SMALL

Cerinate One-Hour Veneers, Upper Central and Lateral, X-SMALL, B1
 Cerinate One-Hour Veneers, Upper Cuspid and Bicuspid, X-SMALL, B1
 Cerinate One-Hour Veneers, Upper Central and Lateral, X-SMALL, A1
 Cerinate One-Hour Veneers, Upper Cuspid and Bicuspid, X-SMALL, A1
 Cerinate One-Hour Veneers, Upper Central and Lateral, X-SMALL, OM1
 Cerinate One-Hour Veneers, Upper Cuspid and Bicuspid, X-SMALL, OM1
 Cerinate One-Hour Veneers, Upper Central and Lateral, X-SMALL, A2
 Cerinate One-Hour Veneers, Upper Cuspid and Bicuspid, X-SMALL, A2

Cerinate One-Hour Veneers: SMALL

Cerinate One-Hour Veneers, Upper Central and Lateral, SMALL, B1
 Cerinate One-Hour Veneers, Upper Cuspid and Bicuspid, SMALL, B1
 Cerinate One-Hour Veneers, Upper Central and Lateral, SMALL, A1
 Cerinate One-Hour Veneers, Upper Cuspid and Bicuspid, SMALL, A1
 Cerinate One-Hour Veneers, Upper Central and Lateral, SMALL, OM1
 Cerinate One-Hour Veneers, Upper Cuspid and Bicuspid, SMALL, OM1
 Cerinate One-Hour Veneers, Upper Central and Lateral, SMALL, A2
 Cerinate One-Hour Veneers, Upper Cuspid and Bicuspid, SMALL, A2

Cerinate One-Hour Veneers: MEDIUM

Cerinate One-Hour Veneers, Upper Central and Lateral, MEDIUM, A1
 Cerinate One-Hour Veneers, Upper Cuspid and Bicuspid, MEDIUM, A1
 Cerinate One-Hour Veneers, Upper Central and Lateral, MEDIUM, B1
 Cerinate One-Hour Veneers, Upper Cuspid and Bicuspid, MEDIUM, B1
 Cerinate One-Hour Veneers, Upper Central and Lateral, MEDIUM, OM1
 Cerinate One-Hour Veneers, Upper Cuspid and Bicuspid, MEDIUM, OM1
 Cerinate One-Hour Veneers, Upper Central and Lateral, MEDIUM, A2
 Cerinate One-Hour Veneers, Upper Cuspid and Bicuspid, MEDIUM, A2

Cerinate One-Hour Veneers: LARGE

Cerinate One-Hour Veneers, Upper Central and Lateral, LARGE, B1
 Cerinate One-Hour Veneers, Upper Cuspid and Bicuspid, LARGE, B1
 Cerinate One-Hour Veneers, Upper Central and Lateral, LARGE, A1
 Cerinate One-Hour Veneers, Upper Cuspid and Bicuspid, LARGE, A1
 Cerinate One-Hour Veneers, Upper Central and Lateral, LARGE, OM1
 Cerinate One-Hour Veneers, Upper Cuspid and Bicuspid, LARGE, OM1
 Cerinate One-Hour Veneers, Upper Central and Lateral, LARGE, A2
 Cerinate One-Hour Veneers, Upper Cuspid and Bicuspid, LARGE, A2

Cerinate One-Hour Veneers: X-LARGE

Cerinate One-Hour Veneers, Upper Central and Lateral, X-LARGE, B1
 Cerinate One-Hour Veneers, Upper Cuspid and Bicuspid, X-LARGE, B1
 Cerinate One-Hour Veneers, Upper Central and Lateral, X-LARGE, A1
 Cerinate One-Hour Veneers, Upper Cuspid and Bicuspid, X-LARGE, A1
 Cerinate One-Hour Veneers, Upper Central and Lateral, X-LARGE, OM1
 Cerinate One-Hour Veneers, Upper Cuspid and Bicuspid, X-LARGE, OM1
 Cerinate One-Hour Veneers, Lower Central and Lateral, X-LARGE, A2
 Cerinate One-Hour Veneers, Upper Cuspid and Bicuspid, X-LARGE, A2

Supplemental Product Refills

Ultra-Bond® Plus Bonding Cement

032599310	Ultra-Bond Plus Refill Kit Shade A1
032599330	Ultra-Bond Plus Refill Kit Shade B1
032599350	Ultra-Bond Plus Refill Kit Shade B0
032599380	Ultra-Bond Plus Refill Kit Shade Supreme White
032599370	Ultra-Bond Plus Refill Kit Shade Neutral

Ultra-Bond is an ADA Type II Restorative proven to prevent cracking/crazing and pop-offs. Cerinate® One-Hour Permanent Veneers, bonded with Ultra-Bond and Tenure®, creates a wear resistant, non-microleaking, highly esthetic restoration that is clinically proven in on-going studies to last over 20 years. Available in Syringeable or Powder-Liquid formulations.



Ultra-Bond® Plus Try-In Paste

031982210	Ultra-Bond Try-In Paste B0
031982310	Ultra-Bond Try-In Paste B1
031982510	Ultra-Bond Try-In Paste A1
031982810	Ultra-Bond Try-In Paste Supreme White
031982710	Ultra-Bond Try-In Paste Neutral

Cerinate One-Hour Permanent Veneers, if placed on the model, is intended to have a loose fit to allow room for the restorative, Ultra-Bond® Plus, an ADA Type II resin cement. Ultra-Bond Plus Try-In Paste is formulated to match the shade of the cured Ultra-Bond. Use to try-in restorations to verify shade.



Tenure® Multi-Purpose Bonding System

031146000	Tenure MPB System
-----------	-------------------

Worry-free bonding! For more than 20 years, the Tenure System has demonstrated a proven clinical record of high bond strengths, excellent retention, and significant reduction of microleakage and post-operative sensitivity. These characteristics can be attributed to the formation of a hybrid zone. In addition, this hybridization process instantly eliminates root sensitivity.



Porcelock®

402060	PorceLock Syringe Kit (3 syringes)
--------	------------------------------------

PorceLock is the perfect companion for porcelain, and crown-and-bridge repair. For repair of porcelain surfaces, the use of PorceLock and Cerinate Prime® with Ultra-Bond allows you to achieve strong and reliable intraoral bonds. PorceLock's gel viscosity and needle tip dispensing allow you to place the gel only where you want it. PorceLock is a buffered intraoral and extraoral use hydrofluoric acid gel that is both safe and effective. Its formula contains 2.5% hydrofluoric acid.

PorceLock creates bond strengths three to five times greater than treatments using silane alone. It achieves bond strengths approaching those of etched enamel after a 3–5 minute treatment.



Etch 'N' Seal®

030402550	Etch 'N' SealL 8pc Syringe Kit
402022	Etch 'N' Seal Medium Viscosity 3mL Syringe (1)

Etch 'N' Seal combines a 25% phosphoric acid with 0.5% aluminum oxalate so you can etch enamel and condition dentin at the same time. The combined use of Etch 'N' Seal and the Tenure Multi-Purpose Bonding System results in the formation of a dentin hybrid layer that can reduce dentin permeability, protect against acid attack and decrease sensitivity.



Paint-On Dental Dam

404201 **Paint-On Dental Dam Syringe Blue 3mL 1 pc**
404210 **Paint-On Dental Dam Kit Blue 3mL 3 pc**

Paint-On Dental Dam, a light-cure resin paste, will help protect gingival tissue from chemical agents. Ideal for use prior to bonding. Syringe Paint-On Dental Dam on the lingual side of gums and teeth. This will make clean-up faster.



Cerinate® Shade Modification System II

033909950 **Shade Modification and Tetrapaque Custom Kit (4 syringes)**

Prevent shade remakes and save time and money. The Cerinate Shade Modification System II can be used alone or mixed with a light-cure composite resin to modify a tint. Tints can be successfully layered. When used with Ultra-Bond or Ultra-Bond Plus, Shade Modifiers will enhance the polychromatic appearance of Cerinate One-Hour Permanent Veneers.



Virtuoso Flowable

032381810 **Virtuoso Flowable Custom Kit 4pc**

Virtuoso Flowable is ideal for small restorations with difficult access. It is a light-cure, low viscosity, flowable composite that has the best handling characteristics for fast and easy techniques. Its precision needle tip dispensing allows it to flow quickly for precise placement.



Cerinate Prime® & Conditioner

1398 **Cerinate Prime Light Cure (Silane) 5ml**
1399 **Cerinate Prime 15ml w/Porcelain Conditioner 6g**
1002A **Porcelain Conditioner 6GM**

Bonding agent and etchant to bond porcelain to natural tooth structure.



Finishing Kit

033897100 **Finishing Kit**

- **Diamond and Bur Block**
- **Schure 349 Instrument**
- **Porcelain Laminate Polishing Paste sy 5g**
- **CeriSaw and CeriSander handles 1ea**
- **CeriSaw Anterior blades 10 pc**
- **CeriSander fine strips 6 pc**
- **CeriSander ultra-fine strips 6 pc**
- **Syringe Tips 18G/10 pc**

Tools that make dentistry faster, easier, and better! This all-inclusive finishing system is the only one of its kind available to the dental profession. These simple tools save you time and are more comforting to the patient.



as seen on tv.

the professional brands patients ask for by name!



LUMINEERS®

The Ultimate in Veneer Technology—
The leader in non-invasive esthetic dentistry.



CERINATE®
One-hour
Permanent Veneers

The One-Hour Smile Makeover—
The porcelain alternative to composite bonding.



snap on
smile®

Removable Esthetics—
Perfect for patients who are missing teeth.

Call 800-445-0345 to learn more.

dm
DenMat®

Den-Mat® Holdings, LLC • 2727 Skyway Drive • Santa Maria CA 93455 • PH 800-445-0345 • www.denmat.com

©2011 Den-Mat® Holdings, LLC. World Rights Reserved. 823058100 05/11CO