

# CERINATE® one-hour Permanent Veneers

CE 0459



## **Cerinate® One-hour Permanent Veneers Placement Kit**

**Pre-Formed High-Strength Cerinate Porcelain Veneers**



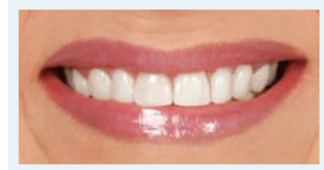
Before



After



Before



After

The **Cerinate® One-hour Permanent Veneers Placement Kit** is a porcelain system to restore teeth and resolve clinical situations where a one-visit, affordable porcelain restoration is desired.

**Cerinate One-hour Permanent Veneers** are indicated for:

- Correcting misalignments and rotations of anterior teeth,
- Closing diastemas
- Minor-to-major color changes
- Restoring chipped incisal edge's
- Reshaping peg-shaped and undersized teeth
- Masking mild-to-severe tetracycline stained teeth

Through use of the **Tenure® Multi-Purpose Bonding System, Ultra-Bond® Plus Resin Cement**, and **Cerinate One-hour Permanent Veneers**, dentists are able to provide leak-free, high-strength bonded porcelain restorations without relying on custom-made units. This is made possible because more than two decades of clinical research has proven that **Tenure** and **Ultra-Bond Plus** produce long-lasting, virtually leak-free restorations.

## DIRECTIONS FOR USE

Please read and understand all instructions before proceeding with placement.

### SELECTING THE ONE-HOUR PERMANENT VENEERS

- Step 1: The first step is to clean the teeth with a slurry of pumice and water or **Porcelain Laminate Polishing Paste** (Figure 1). Use a **Ceri-Saw** with a fine tooth blade to open contacts, if desired.
- Step 2: Take an impression of the teeth that will be treated, preferably using **LUMINEERS Impression PVS**, and pour a stone model (Figure 2). (If you choose to use an alginate impression material, pour the stone model immediately after the impression material has set.)
- Step 3: When the stone model is dry, choose **Cerinate One-hour Permanent Veneers** that come closest to the shape of the teeth being treated and have desired shade characteristics. Fit them onto the stone model to confirm acceptability (Figure 3). A slightly larger **Cerinate One-hour Permanent Veneers** can be adapted to correct dimensions, but using **Cerinate One-hour Permanent Veneers** that are smaller than the underlying tooth will usually leave undesirable margin lines and should be avoided.



Figure 1



Figure 2



Figure 3

## HOW TO ADAPT A ONE-HOUR PERMANENT VENEER

The **Cerinate One-hour Permanent Veneers** can be fitted either intraorally directly to the teeth being restored, or indirectly using the stone model.

**Cerinate One-hour Permanent Veneers** are made of high strength **Cerinate porcelain**. Margins can be adjusted by carefully using a fine diamond in a high speed hand piece with water spray. **Always** contour **Cerinate One-hour Permanent Veneers** with water coolant (Figure 4). We recommend the fine diamonds available in the **LUMINEERS Porcelain Finishing Kit**. A doughnut, football or flame-shaped high speed fine diamond is best for contouring the lingual surface of the **Cerinate One-hour Permanent Veneers**. **Cerinate One-hour Permanent Veneers** are designed to be thicker in the center and flatter on the lingual surface. This design feature provides greater versatility as each **Cerinate One-hour Permanent Veneers** will adapt readily to flat as well as ovate and round teeth.

Step 1: Contour outline of tooth for aesthetic alignment; Mesial-to-distal and incisal-to-gingival margins.



STEP 2: Contour lingual (mating) surface as required for proper fit.

## SURFACE PREPARATION OF ONE-HOUR PERMANENT VENEERS:

1. Syringe 1-3 drops of **PorceLock Porcelain Etching Solution** in a dappen dish (Figure 5). Apply to the bonding surface of the **Cerinate One-hour Permanent Veneers** with either a disposable brush or **Skubes®** (Figure 6). Leave in place for 2 minutes, making sure the surface remains moist. Thoroughly wash for 30 seconds.
2. Treat the **Cerinate One-hour Permanent Veneers** with **Porcelain Conditioner** for 30 seconds (Figure 7). Rinse and dry well.
3. Apply **Cerinate Prime®** to the **Cerinate One-hour Permanent Veneers** for 30 seconds and blow thin.
4. Place one drop each of **Tenure® A** and **Tenure B** into a dappen dish and apply one coat onto the veneers.
5. Place **Cerinate One-hour Permanent Veneers** back into the case box in their proper slots and close lid (or cover from light). Once **Cerinate Prime** is applied to **Cerinate One-hour Permanent Veneers**, they need to be shielded from light until the **Cerinate One-hour Permanent Veneers** are seated.

## PREPARATION OF TOOTH SURFACES

Remove any caries. Remove surface glaze (optional) on the tooth's bonding surface by lightly roughing with a fine diamond bur (Figure 8).

1. **Paint-On Dental Dam** is helpful and recommended for **Cerinate One-hour Permanent Veneers** placement. Before bonding, syringe **Paint-On Dental Dam** on the lingual side of the interproximals, covering gums and teeth thoroughly (Figure 9). Light-cure for 5 seconds per tip width with the **Sapphire® Plasma Arc Curing (PAC) light**. This will make your clean-up faster and easier.
2. Etch teeth for 20 seconds with **Etch 'N' Seal®**. Rinse and dry (Figure 10).
3. Mix together equal amounts of **Tenure A** and **Tenure B** in a dappen dish (Figure 11). Apply 3-5 coats of the **Tenure A-B** mixture to each tooth or until the surface is glossy (Figure 12). Let sit for 10-15 seconds, then gently air-dry.



Figure 4



Figure 5

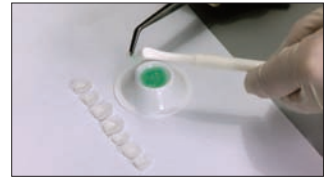


Figure 6



Figure 7



Figure 8



Figure 9

## TRY-IN PROCEDURE:

1. Make any shade and opacity modifications necessary (see SHADE ADJUSTMENT section following). We recommend the **Cerinate Shade Modification System II**. Mix **Ultra-Bond Plus Try-In Paste** and the **Cerinate Shade Modifier/Opaquer** (do not use catalyst) until well-blended and apply to the prepared **Cerinate One-hour Permanent Veneers**. Adjust the ratio of **Ultra-Bond Plus Try-In Paste** to **Cerinate Shade Modifier/Opaquer** to achieve desired result. Make note of the final mixing ratio and use the same proportions for final cementation using **Ultra-Bond Plus** cement (Figure 13).



Figure 10



Figure 11

2. Apply the mixture of **Ultra-Bond Plus Try-In Paste** and **Cerinate Shade Modifier/Opaquer** into each of the **Cerinate One-hour Permanent Veneers**.



Figure 12



Figure 13

3. Gently place the **Cerinate One-hour Permanent Veneers** one at a time and use a brush to clean up the excess **Ultra-Bond Plus Try-In Paste** (Figure 14).



Figure 14

### 4. SHOW PATIENT

- a. Hold a mirror approximately 16 inches away from the patient's face and let the patient examine his/her smile (Figure 15).
- b. If the shade is not what you or the patient wants, remove the **Ultra-Bond Plus Try-In Paste** from the **Cerinate One-hour Permanent Veneers** and tooth surfaces with a **Skubes®** sponge or a clean, dry brush. **DO NOT USE TENURE S**. Reapply a new shade of **Ultra-Bond Plus Try-In Paste** and check the shade again.



Figure 15

**NOTE:** Only use **Tenure S** to clean up excess **ONCE FINAL ULTRA-BOND PLUS TRY-IN PASTE HAS BEEN SELECTED** and you are certain that the **Cerinate One-hour Permanent Veneer** that you've chosen will be placed. Any residue of **Ultra-Bond Plus Try-In Paste** will be polymerized by **Tenure S**.

### 5. REMOVE One-hour Permanent Veneers AFTER TRY-IN.

- a. Use a **Schure 349** instrument or cotton pliers and gently tease the **Cerinate One-hour Permanent Veneers** off the tooth surfaces (Figure 16).
- b. Remove the **Ultra-Bond Plus Try-In Paste** from the **Cerinate One-hour Permanent Veneers** and tooth surfaces with a **Skubes** sponge or a clean, dry brush (Figure 17).
- c. After cleaning residual **Ultra-Bond Plus Try-In Paste** from the **Cerinate One-hour Permanent Veneers** with **Tenure S**, gently thin the **Tenure S** with air. A thin film will be left on both the tooth and porcelain surfaces. Place **Cerinate One-hour Permanent Veneers** back in the case box in their proper slots. Close lid (or cover from light).



Figure 16



Figure 17

**NOTE:** There is no need to reapply **Porcelain Conditioner** or **Cerinate Prime** if you are cementing directly after try-in.

## RE-USING ONE-HOUR PERMANENT VENEERS

It's possible that during Try-In you'll find that the **Cerinate One-hour Permanent Veneers** that you've chosen isn't quite right and that another is more suitable. You'll want to protect your patients from infection, so if you don't discard the unit, you'll need to clean it and sterilize it.

1. Use a Q-Tip or brush to clean residual **Try-In Paste** from the **Cerinate One-hour Permanent Veneers**. Hold in running tap water to clean out any residue, if necessary.
2. Autoclave at 270°F (132°C) at 27 psi (186 kPa) in a sterilized pouch for 15 minutes. Return to their trays when cooled.

## BONDING ONE-HOUR PERMANENT VENEERS

1. **BONDING Cerinate One-hour Permanent Veneers TO AN ENAMEL OR DENTIN SURFACE**

a. Select the appropriate shade of **Ultra-Bond Plus** resin cement.

**NOTE:** After placing the auto-mixer tip on the **Ultra-Bond Plus** syringe, always extrude and discard a 1/4-inch line of material before using to ensure that material being dispensed is mixed at a 1:1 ratio.

- b. Apply **Ultra-Bond Plus** to the prepared **Cerinate One-hour Permanent Veneers** and put in place (Figure 18). **Ultra-Bond Plus** has an extended working and set time to permit placement of multiple Veneers. We suggest that the clinician dispense a small amount of **Ultra-Bond Plus** onto a mixing pad a minute or two before beginning placement and monitor it for working time to provide warning in the event that placement takes longer than anticipated.
- c. After placing **Cerinate One-hour Permanent Veneers** one at a time, remove excess **Ultra-Bond Plus** using a **Tenure S Dab-Eze**® sponge or soft brush coated with **Tenure S** (Figure 19). Tack **Cerinate One-hour Permanent Veneers** in place for 2 seconds using the **Sapphire PAC light** fitted with a **Ceri-Taper**™ 2 mm tacking tip.

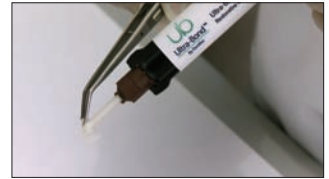


Figure 18



Figure 19



### VERY IMPORTANT TOOL!

- d. When the fit is not exact, where a gap of 100 microns or more exists or recontouring has been performed, **Virtuoso® Flowable Composite** can be used as the luting cement to provide additional support. The Flowable can also be used to fill open margins.

**NOTE:** If patient has dark stains, such as tetracycline stains, we recommend using the **Cerinate Shade Modification System II**. If shade modification or basic opaque adjustment is necessary, refer to the **SHADE AND OPACITY ADJUSTMENT** section following. If not, proceed to the next step.



- e. Continue to tack each Veneer, cure and remove excess cement with a soft brush coated with **Tenure S** (Figure 20).
- f. Using a 9 mm tip and the **Sapphire PAC light**, completely cure all **Cerinate One-hour Permanent Veneers**, exposing each surface for 5 seconds (Figure 21).
- g. Remove **Paint-on Dental Dam** if placed.



Figure 20



Figure 21

## SHADE AND OPACITY ADJUSTMENTS

### 1. MIXING

- a. Blend shades necessary to achieve the desired color. (See Chairside Color Modification Tips; included in the **Cerinate Shade Modification System II** or available at <http://www.denmat.com>.) Use **Cerinate Clear** to reduce the intensity, if necessary. Shades may be blended on a mixing pad prior to placement or on the tooth prior to curing.
- b. Layer **Cerinate Shade Modifier/Opaquer** onto **Cerinate One-hour Permanent Veneers**, followed by **Ultra-Bond Plus**. The modifiers/opaquers can also be mixed directly with **Ultra-Bond Plus** to achieve desired shades. The modified shade of **Ultra-Bond Plus** can then be placed in the restoration. Proceed with cementation.

### 2. TETRAPAQUE® (opacifier) DIRECTIONS

- a. Mix equal parts of the **TetraPaque** shade of choice and **TetraPaque Dual-Cure Initiator** on a mixing pad or in a dappen dish. Once mixed, **TetraPaque** will self-cure in 4-6 minutes. Plan your placement accordingly.
- b. Apply the mixed dual-cure **TetraPaque** to the prepared tooth with a fine sable brush. Apply as thinly and smoothly as possible to mask discoloration.
- c. Apply and seat the **Cerinate One-hour Permanent Veneers** with **Ultra-Bond Plus** inside.

### 3. TETRAPAQUE® PINK DIRECTIONS

**NOTE:** **TetraPaque Pink** neutralizes dark stains, such as tetracycline stains, and results in a warmer, natural color.

- a. Apply **TetraPaque Pink** to the prepared tooth surface using a sable brush. Blend **TetraPaque Pink** onto the tooth structure.
- b. Apply **Ultra-Bond Plus** to the bonding surface of the **Cerinate One-hour Permanent Veneers**.
- c. Gently seat the **Cerinate One-hour Permanent Veneers**. Observe the results.
- d. If the desired shade is achieved, proceed to the BONDING **Cerinate One-hour Permanent Veneers** section.

### 4. SPECIAL TIPS

- a. To neutralize yellow, orange, or yellow-orange stains, use a combination of violet, blue, or blue-violet shades. There is no formula, but the **Cerinate Shade Modifiers**, **Ultra-Bond Plus Resin Cement** and **TetraPaque Opacifiers** are sure to offer a combination that works for you.
- b. A low-value yellow (gray-yellow) stain can be neutralized by violet (to neutralize the yellow) and white (either **Cerinate Shade Modifier White** or **TetraPaque Enamel**).

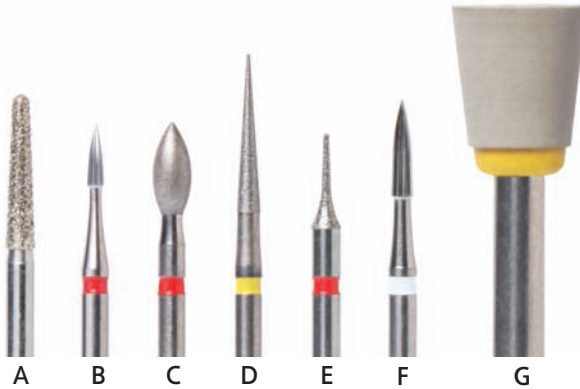
**NOTE:** For additional information, refer to the "Chairside Color Modification Tips," which is included in the **Cerinate Shade Modification System II** or available at [www.denmat.com](http://www.denmat.com).

**NOTE:** After color selection is achieved with modifiers/opacifiers, internal surfaces of **Cerinate One-hour Permanent Veneers** do not need to be re-treated.

**NOTE:** If you have elected to skip **Cerinate One-hour Permanent Veneers** try-in, brush a thin coat of **Tenure S** into each of the **One-hour Permanent Veneers** and thin with air.

## FINISHING

Minimal finishing is suggested to finish the DEJ and to remove any excess resin cement. Carefully open the embrasures. We recommend the **LUMINEERS Finishing Kit**, which includes all components listed in the following instructions.



- |                                     |                                       |
|-------------------------------------|---------------------------------------|
| A. Diamond porcelain ledge bur      | E. Diamond mosquito interproximal bur |
| B. Carbide 12 fluted bur            | F. Carbide clean-up bur               |
| C. Diamond football bur             | G. Polishing cup                      |
| D. Diamond extra-fine smoothing bur |                                       |

- a. Clean up any leftover **Ultra-Bond Plus** using either the carbide 12 Fluted bur (B) or the carbide clean-up bur (F) (Figure 22).
- b. Use a **Schure 349** instrument to remove the cured cement along the margins, as well as from the interproximal area along both the facial and the lingual. You may also use the carbide 12 fluted bur (B). This bur is an excellent tool for cleaning up residual resin cement and for finishing composites (Figure 23).
- c. Using a diamond mosquito interproximal bur (E), remove the porcelain ledge, if any (Figure 24).
- d. Using the diamond mosquito interproximal bur (E), refine the margins along the interproximal area, if necessary.
- e. Trim/polish the margins of the porcelain veneer, if necessary. Use a diamond extra-fine smoothing bur (D) to smooth out porcelain (Figure 25).
- f. Explore the tooth structure next to the **Cerinate One-hour Permanent Veneers** to check margins. There should not be a catch (or bump) (Figure 26).
- g. If necessary, further polish the margins using the diamond mosquito interproximal bur (E) again.
- h. Check the bite with articulating paper. Use the diamond football bur (C) on the lingual to finish the incisal wrap and adjust high spots or length (Figure 27).
- i. Place a wooden wedge interproximally (optional).
- j. Use the **CeriSaw** to separate the teeth using a rocking motion. Leave the wooden wedge in place (figure 28).
- k. Use the **CeriSander** (fine grit) to smooth the interproximal surfaces.



Figure 22



Figure 23



Figure 24



Figure 25



Figure 26



Figure 27

- l. Use the **CeriSander** (ultra-fine grit) to further smooth the interproximal surfaces. It is important that you use each sanding blade only two or three times per tooth to smooth contacts.
- m. Remove the wooden wedge.
- n. Check the interproximal surfaces with dental floss for smoothness.
- o. Polish the new smile beginning with a carbide clean-up bur (F). Continue with **Porcelain Laminate Polishing Paste** using polishing cup (G).



Figure 28

## TIPS

- Try-in: It is always best to try in **Cerinate One-hour Permanent Veneers** with the **Ultra-Bond Plus Try-In Paste** to preview shades and choose the most natural, translucent appearance. This adds greatly to patient acceptance. Use of the clear shade is NOT recommended on **Cerinate One-hour Permanent Veneers** because it allows the unwanted color of the underlying tooth to show through and will not produce the desired shade. Instead use A1, B1, etc. **Ultra-Bond Plus Try-In Paste** is recommended for patient satisfaction and acceptance.
- Check Occlusion: Failing to check occlusion and not taking steps to adjust occlusion properly is one of the most common reasons for chipping or fracture. Never touch occlusion until after the **Cerinate One-hour Permanent Veneers** are securely bonded with **Ultra-Bond** and **Tenure**. Then, adjust occlusion to remove all prematurities in centric, lateral excursion, and anterior disclusion. The most frequent cause of fracture and failure of **Cerinate One-hour Permanent Veneers** is due to trauma from malocclusion. It is easily avoidable if you take the time. Remember that placing **Cerinate One-hour Permanent Veneers** is quick and straight-forward, but checking occlusion is the final step you need to take to make sure the restorations you just placed are going to last.

## STORAGE

**Ultra-Bond Plus Pastes** should be refrigerated to maximize shelf life. Bring to room temperature before use.

**Do not** expose to temperatures exceeding 75°F (23°C).

**Do not** expose to direct sunlight.

**Do not** freeze.

## RELATED PRODUCTS AVAILABLE FROM DEN-MAT



If you prefer, for an additional fee, the DenMat® Lab will custom-fit **Cerinate One-hour Permanent Veneers** for your case in our world-class laboratory. Send us your patient's model and we'll return the case to you in 48 hours.\*

### \*Shipping

All delivery days are working days only, from date of case acceptance (including acceptable impressions/models, bite registration, and complete prescription information). Working days so not include weekends or holidays. Times do not include time in transit and times do not include the day case is shipped.



## Refill Products

### Ultra-Bond® Plus Bonding Cement

032599310 ..... Ultra-Bond Plus Refill Kit Shade A1  
032599330 ..... Ultra-Bond Plus Refill Kit Shade B1  
032599350 ..... Ultra-Bond Plus Refill Kit Shade B0  
032599380 ..... Ultra-Bond Plus Refill Kit Shade Supreme White  
032599370 ..... Ultra-Bond Plus Refill Kit Shade Neutral

### Ultra-Bond® Plus Try-In Paste

031982210 ..... Ultra-Bond Try-In Paste B0  
031982310 ..... Ultra-Bond Try-In Paste B1  
031982510 ..... Ultra-Bond Try-In Paste A1  
031982810 ..... Ultra-Bond Try-In Paste Supreme White  
031982710 ..... Ultra-Bond Try-In Paste Neutral

### Tenure® Multi-Purpose Bonding System

031146000 ..... Tenure MPB System

### Porcelock®

402060 ..... PorceLock Syringe Kit (3 syringes)

### Etch 'N' Seal®

030402550 ..... Etch 'N' SealL 8pc Syringe Kit  
402022 ..... Etch 'N' Seal Medium Viscosity 3mL Syringe (1)

### Paint-On Dental Dam

404201 ..... Paint-On Dental Dam Syringe Blue 3mL 1 pc  
404210 ..... Paint-On Dental Dam Kit Blue 3mL 3 pc

### Cerinate® Shade Modification System II

033909950 ..... Shade Modification and Tetrapaque Custom Kit (4 syringes)

### Virtuoso Flowable

032381810 ..... Virtuoso Flowable Custom Kit 4pc

### Cerinate Prime® & Conditioner

1398 ..... Cerinate Prime Light Cure (Silane) 5ml  
1399 ..... Cerinate Prime 15ml w/Porcelain Conditioner 6g  
1002A ..... Porcelain Conditioner 6g

### Finishing Kit

033897100 ..... Finishing Kit

- Diamond and Bur Block
- Schure 349 Instrument
- Porcelain Laminate Polishing Paste sy 5g
- CeriSaw and CeriSander handles 1ea
- CeriSaw Anterior blades 10 pc
- CeriSander fine strips 6 pc
- CeriSander ultra-fine strips 6 pc
- Syringe Tips 18G/10 pc

## WARRANTY

Limited Lifetime Warranty cards are provided for patients in the Cerinate® One-hour Permanent Veneers placement and refill kits.

### Patient Warranty Overview (see warranty cards for complete details):

Den-Mat® Holdings, LLC (“Den-Mat”) warrants that the original Cerinate® One-hour Permanent Veneers affixed to your teeth will be free from defects in material or workmanship during your lifetime. In the event of a defect, these are your exclusive remedies and are limited to the person listed on this card.

Replacement Warranty: DenMat will replace the defective original veneer. DenMat will not replace or repair crowns or bridgework and will not cover dental fees associated with veneer replacement. DenMat’s warranty obligation, with respect to an original veneer affixed to a particular tooth, is limited to a one (1) time replacement veneer for that tooth, and DenMat makes no warranty, express or implied, with respect to that replacement veneer.

This Limited Warranty only covers defects in material and workmanship to the original veneers during ordinary consumer use; it does not cover veneer issues caused by any other reason, including, but not limited to, veneer issues due to commercial use, accidents, abuse, improper installation, acts of God, failure of supporting tooth or tissue structures, improper adjustments, or improper dental hygiene.

Conditions: In order for the Limited Warranty to apply, the following conditions must be met 1) Patient must adhere, at a minimum, to an annual dental maintenance (cleaning exam) program as prescribed and performed by a licensed hygienist and the maintenance schedule must be documented on this Limited Warranty card by the attending dentist at each visit; and 2) Product must be shipped with the work authorization, copy of the maintenance schedule, and copy of the Limited Warranty card to the DenMat Lab.

Instructions: To obtain warranty service, you must consult with a licensed dentist who will send the defective original veneer to DenMat for replacement along with an intraloral photograph of the defective veneer. There will be no handling charge for warranty work for the first 30 days of the warranty period. After 30 days, there will be a \$9.95 (US dollars) handling charge, plus shipping. The shipping and handling charges may be adjusted, at our sole discretion, from time to time based on increased costs of processing warranty claims. If the fees associated with shipping and handling increase, you will be notified in advance of your claim being processed.

LIMITATION ON DAMAGES: DENMAT SHALL NOT BE LIABLE FOR ANY INCIDENTAL OR CONSEQUENTIAL DAMAGES FOR BREACH OF ANY EXPRESS OR IMPLIED WARRANTY ON THE PRODUCT. DURATION OF IMPLIED WARRANTIES: EXCEPT TO THE EXTENT PROHIBITED BY APPLICABLE LAW, ANY IMPLIED WARRANTY OF MERCHANTABILITY OR FITNESS FOR A PARTICULAR PURPOSE ON THIS PRODUCT IS LIMITED IN DURATION TO THE DURATION OF THIS WARRANTY.

Some states and jurisdictions do not allow the exclusion or limitation of incidental or consequential damages, or allow limitations on how long an implied warranty lasts, so the above limitations or exclusions may not apply to you or may be void where prohibited. This Limited Warranty gives you specific legal rights and you may have other rights that vary state to state or within your particular jurisdiction.

This limited warranty is in lieu of all other warranties, express or implied, and may not be modified or extended.

For Warranty claims, please visit your dentist. Your dentist will send in the Cerinate® One-hour Permanent Veneers and a copy of this warranty to:

DenMat Lab  
2727 Skyway Drive  
Santa Maria, CA 93455

### Placement Kit Warranty

Den-Mat will replace, or refund the purchase price of any of its products that are proven to be defective within 30 days of the purchase date. Replacement of defective goods, or refund of the purchase price shall be the exclusive remedy for the user. Den-Mat will not be liable for any economic, incidental, or consequential loss or damage that arises out of the use of, or the inability to use its products.

This limited warranty is in lieu of all other warranties, expressed or implied, and shall be void if the product is improperly stored or used. There are no implied warranties of merchantability, fitness for a particular purpose, or otherwise. Before using this product, the user shall determine whether it is suitable for the intended use and the user shall assume all risk and liability associated therewith.

## TELEPHONE INQUIRY SERVICE

Technical consultation is available by calling toll-free in the U.S.A. and Canada

Ordering, Product Technical Support	(800) 433-6628	Option 1
1Call Customer Service	(800) 433-6628	Option 2
1Call Customer Service Lab Consultant	(800) 433-6628	Option 3
Domestic Fax Ordering and Inquiry	(800) 233-6628	
International Inquiry	(805) 347-7990	
International Fax Ordering and Inquiry	(805) 349-2607	

Websites: [www.lumineersdds.com](http://www.lumineersdds.com)  
[www.denmat.com](http://www.denmat.com)

MSDS SHEETS AVAILABLE AT [WWW.DENMAT.COM](http://WWW.DENMAT.COM)