

CERINATE®  
**Express**  
Permanent Veneers

CE 0459

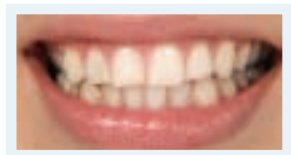




Before



After



Before



After

## FIRST VISIT

### Check-up

1. Communicate with your patient about planned treatment.
2. Reshape rotated or overlapping teeth where necessary.
3. Determine if your patient is a grinder (bruxism). If so, patient should wear a LUMIGuard protection guard at night.
4. Equilibrate the occlusion if necessary.

### Impressions

Upper arch and lower arch polyvinyl impressions and a bite registration are required for every caes.

1. Select a stock tray or custom tray.
2. Load the tray with LUMINEERS PVS Impression Material.
3. Respect the recommended working and setting time of the product.

## Check the Impressions!

- Correct impression tray.
- No bubbles.
- Enough impression material.
- No distortion of the impression.
- No preparation on the incisal edge or buccal surface.

## SECOND VISIT

1. Treat the **Cerinate® Express Permanent Veneers** with **Porcelain Conditioner** for 30 seconds (Figure 1). Rinse and dry well.
2. Apply **Cerinate Prime®** to the **Cerinate Express Permanent Veneers** for 30 seconds and blow thin.
3. Place one drop each of **Tenure® A** and **Tenure B** into a dappen dish and apply one coat onto the veneers.
4. Place **Cerinate Express Permanent Veneers** back into the case box in their proper slots and close lid (or cover from light). Once **Cerinate Prime** is applied to **Cerinate Express Permanent Veneers**, they need to be shielded from light until the **Cerinate Express Permanent Veneers** are seated.

## PREPARATION OF TOOTH SURFACES

Remove any caries. Remove surface glaze (optional) on the tooth's bonding surface by lightly roughing with a fine diamond bur (Figure 2).

1. **Paint-On Dental Dam** is helpful and recommended for **Cerinate Express Permanent Veneers** placement. Before bonding, syringe **Paint-On Dental Dam** on the lingual side of the interproximals, covering gums and teeth thoroughly (Figure 3). Light-cure for 5 seconds per tip width with the **Sapphire® Plasma Arc Curing (PAC) light**. This will make your clean-up faster and easier.
2. Etch teeth for 20 seconds with **Etch 'N' Seal®**. Rinse and dry (Figure 4).



Figure 1



Figure 2

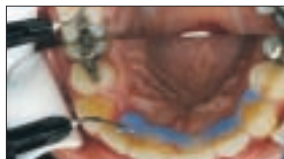


Figure 3



Figure 4

3. Mix together equal amounts of **Tenure® A** and **Tenure B** in a dappen dish (Figure 5). Apply 3-5 coats of the **Tenure A-B** mixture to each tooth or until the surface is glossy (Figure 6). Let sit for 10-15 seconds, then gently air-dry.

### TRY-IN PROCEDURE:

1. Make any shade and opacity modifications necessary (see SHADE ADJUSTMENT section following). We recommend the **Cerinate® Shade Modification System II**. Mix **Ultra-Bond Plus Try-In Paste** and the **Cerinate Shade Modifier/Opaquer** (do not use catalyst) until well-blended and apply to the prepared **Cerinate® Express Permanent Veneers**. Adjust the ratio of **Ultra-Bond® Plus Try-In Paste** to **Cerinate Shade Modifier/Opaquer** to achieve desired result. Make note of the final mixing ratio and use the same proportions for final cementation using **Ultra-Bond Plus** cement.
2. Apply the mixture of **Ultra-Bond Plus Try-In Paste** and **Cerinate Shade Modifier/Opaquer** into each of the **Cerinate Express Permanent Veneers**.
3. Gently place the **Cerinate Express Permanent Veneers** one at a time and use a brush to clean up the excess **Ultra-Bond Plus Try-In Paste** (Figure 7).
4. SHOW PATIENT
  - a. Hold a mirror approximately 16 inches away from the patient's face and let the patient examine his/her smile (Figure 8).
  - b. If the shade is not what you or the patient wants, remove the **Ultra-Bond Plus Try-In Paste** from the **Cerinate Express Permanent Veneers** and tooth surfaces with a **Skubes®** sponge or a clean, dry brush. **DO NOT USE TENURE® S**. Reapply a new shade of **Ultra-Bond Plus Try-In Paste** and check the shade again (Figure 9).



Figure 5



Figure 6



Figure 7



Figure 8



Figure 9

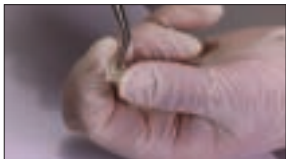


Figure 10

**NOTE:** Only use **Tenure S** to clean up excess **ONCE FINAL ULTRA-BOND PLUS TRY-IN PASTE HAS BEEN SELECTED** and you are certain that the **Cerinate® Express Permanent Veneers** that you've chosen will be placed. Any residue of **Ultra-Bond® Plus Try-In Paste** will be polymerized by **Tenure® S**.

5. REMOVE **Cerinate Express Permanent Veneers** AFTER TRY-IN.
  - a. Use a **Schure 349** instrument or cotton pliers and gently tease the **Cerinate Express Veneers** off the tooth surfaces.
  - b. Remove the **Ultra-Bond Plus Try-In Paste** from the **Cerinate Express Permanent Veneers** and tooth surfaces with a **Skubes** sponge or a clean, dry brush (Figure 10).
  - c. After cleaning residual **Ultra-Bond Plus Try-In Paste** from the **Cerinate Express Permanent Veneers** with **Tenure S**, gently thin the **Tenure S** with air. A thin film will be left on both the tooth and porcelain surfaces. Place **Cerinate Express Permanent Veneers** back in the case box in their proper slots. Close lid (or cover from light).

**NOTE:** There is no need to reapply **Porcelain Conditioner** or **Cerinate Prime** if you are cementing directly after try-in.

## BONDING CERINATE EXPRESS VENEERS

### 1. BONDING **Cerinate Express Permanent Veneers** TO AN ENAMEL OR DENTIN SURFACE

- a. Select the appropriate shade of **Ultra-Bond Plus** resin cement.

**NOTE:** After placing the auto-mixer tip on the **Ultra-Bond Plus** syringe, always extrude and discard a 1/4-inch line of material before using to ensure that material being dispensed is mixed at a 1:1 ratio.

**NOTE:** If patient has dark stains, such as tetracycline stains, we recommend using the **Cerinate Shade Modification System II**. If shade modification or basic opaque adjustment is necessary, refer to the SHADE AND OPACITY ADJUSTMENT section following. If not, proceed to the next step.

- b. Apply **Ultra-Bond® Plus** to the prepared **Cerinate® Express Permanent Veneers** and put in place (Figure 18). **Ultra-Bond Plus** has an extended working and set time to permit placement of multiple Veneers. We suggest that the clinician dispense a small amount of **Ultra-Bond Plus** onto a mixing pad a minute or two before beginning placement and monitor it for working time to provide warning in the event that placement takes longer than anticipated.
- c. When the fit is not exact, where a gap of 100 microns or more exists or recontouring has been performed, **Virtuoso® Flowable Composite** can be used as the luting cement to provide additional support. The Flowable can also be used to fill open margins.
- d. After placing **Cerinate Express Permanent Veneers** one at a time, remove excess **Ultra-Bond Plus** using a **Tenure S Dab-Eze®** sponge or soft brush coated with **Tenure S** (Figure 12). Tack **Cerinate Express Permanent Veneers** in place for 2 seconds using the **Sapphire PAC light** fitted with a **Ceri-Taper™ 2 mm tacking tip** (Figure 13).



Figure 11



Figure 12



Figure 13



Figure 14



Ceri-Taper™  
2 mm  
tacking tip



Save 50% in  
finishing  
time!

**VERY IMPORTANT TOOL!**

- e. Continue to tack each Veneer, cure and remove excess cement with a soft brush coated with **Tenure S**.
- f. Using a 9 mm tip and the **Sapphire PAC light**, completely cure all **Cerinate Express Permanent Veneers**, exposing each surface for 5 seconds (Figure 14).
- g. Remove **Paint-on Dental Dam** if placed.

## SHADE AND OPACITY ADJUSTMENTS

### 1. MIXING

- a. Blend shades necessary to achieve the desired color. (See Chairside Color Modification Tips; included in the **Cerinate® Shade Modification System II** or available at [www.denmat.com](http://www.denmat.com).) Use **Cerinate® Clear** to reduce the intensity, if necessary. Shades may be blended on a mixing pad prior to placement or on the tooth prior to curing.
- b. Layer **Cerinate Shade Modifier/Opaquer** onto **Cerinate® Express Permanent Veneers**, followed by **Ultra-Bond Plus**. The modifiers/opaquers can also be mixed directly with **Ultra-Bond Plus** to achieve desired shades. The modified shade of **Ultra-Bond® Plus** can then be placed in the restoration. Proceed with cementation.

### 2. TETRAPAQUE® (opacifier) DIRECTIONS

- a. Mix equal parts of the **TetraPaque** shade of choice and **TetraPaque Dual-Cure Initiator** on a mixing pad or in a dappen dish. Once mixed, **TetraPaque** will self-cure in 4-6 minutes. Plan your placement accordingly.
- b. Apply the mixed dual-cure **TetraPaque** to the prepared tooth with a fine sable brush. Apply as thinly and smoothly as possible to mask discoloration.
- c. Apply and seat the **Cerinate Express Permanent Veneers** with **Ultra-Bond Plus** inside.

### 3. TETRAPAQUE® PINK DIRECTIONS

**NOTE:** **TetraPaque Pink** neutralizes dark stains, such as tetracycline stains, and results in a warmer, natural color.

- a. Apply **TetraPaque Pink** to the prepared tooth surface using a sable brush. Blend **TetraPaque Pink** onto the tooth structure.
- b. Apply **Ultra-Bond Plus** to the bonding surface of the **Cerinate Express Permanent Veneers**.
- c. Gently seat the **Cerinate Express Permanent Veneers**. Observe the results.
- d. If the desired shade is achieved, proceed to the BONDING **Cerinate Express Permanent Veneers** section.

#### 4. SPECIAL TIPS

- a. To neutralize yellow, orange, or yellow-orange stains, use a combination of violet, blue, or blue-violet shades. There is no formula, but the **Cerinate Shade Modifiers**, **Ultra-Bond Plus Resin Cement** and **TetraPaque Opacifiers** are sure to offer a combination that works for you.
- b. A low-value yellow (gray-yellow) stain can be neutralized by violet (to neutralize the yellow) and white (either **Cerinate Shade Modifier White** or **TetraPaque Enamel**).

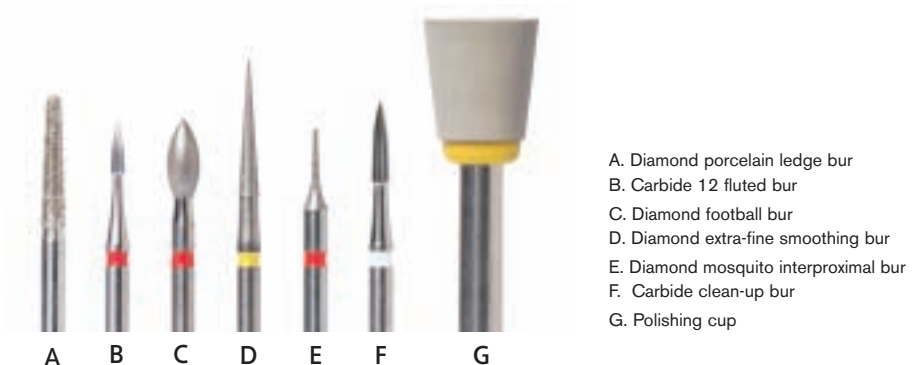
**NOTE:** For additional information, refer to the “LUMINEERS Chairside Color Modification Tips,” which is included in the **Cerinate® Shade Modification System II** or available at [www.denmat.com](http://www.denmat.com).

**NOTE:** After color selection is achieved with modifiers/opacifiers, internal surfaces of **Cerinate Express Permanent Veneers** do not need to be re-treated.

**NOTE:** If you have elected to skip **Cerinate Express Permanent Veneers** try-in, brush a thin coat of **Tenure® S** into each of the **Cerinate Express Permanent Veneer** and thin with air.

#### FINISHING

Minimal finishing is suggested to finish the dental enamel junction and to remove any excess resin cement. Carefully open the embrasures. We recommend the **LUMINEERS® Finishing Kit**, which includes all components listed in the following instructions.



- a. Clean up any leftover **Ultra-Bond® Plus** using either the carbide 12 Fluted bur (B) or the carbide clean-up bur (F) (Figure 15).
- b. Use a **Schure 349** instrument to remove the cured cement along the margins, as well as from the interproximal area along both the facial and the lingual (Figure 16). You may also use the carbide 12 fluted bur (B). This bur is an excellent tool for cleaning up residual resin cement and for finishing composites.
- c. Using a diamond mosquito interproximal bur (E), remove the porcelain ledge, if any (Figure 17).
- d. Using the diamond mosquito interproximal bur (E), refine the margins along the interproximal area, if necessary.
- e. Trim/polish the margins of the porcelain veneer, if necessary. Use a diamond extra-fine smoothing bur (D) to smooth out porcelain (Figure 18).
- f. Explore the tooth structure next to the **Cerinate® Express Permanent Veneers** to check margins. There should not be a catch (or bump) (Figure 19, *page 10*).
- g. If necessary, further polish the margins using the diamond mosquito interproximal bur (E) again.
- h. Check the bite with articulating paper. Use the diamond football bur (C) on the lingual to finish the incisal wrap and adjust high spots or length (Figure 20, *page 10*).
- i. Place a wooden wedge interproximally (optional).
- j. Use the **CeriSaw** to separate the teeth using a rocking motion. Leave the wooden wedge in place (figure 21, *page 10*).
- k. Use the **CeriSander** (fine grit) to smooth the interproximal surfaces.



Figure 15



Figure 16



Figure 17



Figure 18

- l. Use the **CeriSander** (ultra-fine grit) to further smooth the interproximal surfaces. It is important that you use each sanding blade only two or three times per tooth to smooth contacts.
- m. Remove the wooden wedge.
- n. Check the interproximal surfaces with dental floss for smoothness.
- o. Polish the new smile beginning with a carbide clean-up bur (F). Continue with **Porcelain Laminate Polishing Paste** using polishing cup (G).



Figure 19



Figure 20



Figure 21

## TIPS

- Try-in: It is always best to try in **Cerinate® Express Permanent Veneers** with the **Ultra-Bond® Plus Try-In Paste** to preview shades and choose the most natural, translucent appearance. This adds greatly to patient acceptance. Use of the clear shade is NOT recommended on **Cerinate Express Permanent Veneers** because it allows the unwanted color of the underlying tooth to show through and will not produce the desired shade. Instead use A1, B1, etc. **Ultra-Bond Plus Try-In Paste** is recommended for patient satisfaction and acceptance.
- Check Occlusion: Failing to check occlusion and not taking steps to adjust occlusion properly is one of the most common reasons for chipping or fracture. Never touch occlusion until after the **Cerinate Express Permanent Veneers** are securely bonded with **Ultra-Bond** and **Tenure**. Then, adjust occlusion to remove all prematurities in centric, lateral excursion, and anterior disclusion. The most frequent cause of fracture and failure of **Cerinate Express Permanent Veneers** is due to trauma from malocclusion. It is easily avoidable if you take the time. Remember that placing **Cerinate Express Permanent Veneers** is quick and straight-forward, but checking occlusion is the final step you need to take to make sure the restorations you just placed are going to last.

## SUPPLEMENTAL PRODUCTS

### Ultra-Bond® Plus Bonding Cement

Ultra-Bond Plus Refill Kit Shade A1 . . . . .	032599310
Ultra-Bond Plus Refill Kit Shade B1 . . . . .	032599330
Ultra-Bond Plus Refill Kit Shade B0 . . . . .	032599350
Ultra-Bond Plus Refill Kit Shade Supreme White . . . . .	032599380
Ultra-Bond Plus Refill Kit Shade Neutral . . . . .	032599370

### Ultra-Bond® Plus Try-In Paste

Ultra-Bond Try-In Paste B0 . . . . .	031982210
Ultra-Bond Try-In Paste B1 . . . . .	031982310
Ultra-Bond Try-In Paste A1 . . . . .	031982510
Ultra-Bond Try-In Paste Supreme White . . . . .	031982810
Ultra-Bond Try-In Paste Neutral . . . . .	031982710

### Tenure® Multi-Purpose Bonding System

Tenure MPB System . . . . .	031146000
-----------------------------	-----------

### Porcelock®

PorceLock Syringe Kit (3 syringes) . . . . .	402060
--	--------

### Etch 'N' Seal®

Etch 'N' SealL 8pc Syringe Kit . . . . .	030402550
Etch 'N' Seal Medium Viscosity 3mL Syringe (1) . . . . .	402022

### Paint-On Dental Dam

Paint-On Dental Dam Syringe Blue 3mL 1 pc . . . . .	404201
Paint-On Dental Dam Kit Blue 3mL 3 pc . . . . .	404210

### Cerinate® Shade Modification System II

Shade Modification and Tetrapaque Custom Kit (4 syringes) . . . . .	033909950
--	-----------

**Virtuoso Flowable**

Virtuoso Flowable Custom Kit 4pc ..... 032381810

**Cerinate Prime® & Conditioner**

Cerinate Prime Light Cure (Silane) 5ml ..... 1398

Cerinate Prime 15ml w/Porcelain Conditioner 6g..... 1399

Porcelain Conditioner 6g..... 1002A

**Finishing Kit**

Finishing Kit ..... 033897100

- Diamond and Bur Block
- Schure 349 Instrument
- Porcelain Laminate Polishing Paste sy 5g
- CeriSaw and CeriSander handles 1 ea
- CeriSaw Anterior blades 10 pc
- CeriSander fine strips 6 pc
- CeriSander ultra-fine strips 6 pc
- Syringe Tips 18G/10 pc

## TELEPHONE INQUIRY SERVICE

Technical consultation is available by calling toll-free in the U.S.A. and Canada

Ordering, Product Technical Support	(800) 433-6628	Option 1
1Call Customer Service	(800) 433-6628	Option 2
1Call Customer Service Lab Consultant	(800) 433-6628	Option 3
Domestic Fax Ordering and Inquiry	(800) 233-6628	
International Inquiry	(805) 347-7990	
International Fax Ordering and Inquiry	(805) 349-2607	
Website: <a href="http://www.denmat.com">www.denmat.com</a>		